

# Réunion des Administrateurs de la forêt IN2P3

JI 2006



- Tour de table
- Divers
- Nouveautés à venir



# Labo

- Architecture en place
- Projets en cours et futurs
- Annuaire commun Windows/linux
- Virtualisation
- Migration Windows 2003
  
- Besoins et attentes



# Divers

- Accès TRAC
- Déplacement/achat serveur / travaux CC
- Monitoring de la forêt
- Windows 2003 R2 en tête de forêt
- Sauvegarde AD
- Repository MSI
  
- Organisation Réunions





Microsoft  
**Windows Server** 2003



Microsoft  
**Windows Server** 2003 R2



**Windows Server**  
Update Services



Microsoft  
**Windows Server**  
"Longhorn"

A venir...



# A venir

- Windows 2003 R2
- Windows 2003 SP2
- WSUS v3.0
- Vista
- Vista Server



# Windows 2003 R2

- **ADFS** , Permet de faire de la fédération de l'active directory. L'AD d'une forêt/domaine peut être interrogé par web service.
- **DFS** , Le moteur DFS a été revu et recréer et permet des synchronisations plus optimisées. DFSR qui permet via **RDC(Remote Differential compression)** de répliquer les fichiers en ne faisant une réplication que de ce qui a été modifié dans le fichier.



# Windows 2003 R2

- **File Server**, La gestion des quota se fait par répertoire sans gestion des utilisateurs.  
**Les file screen** qui permettent de bloquer le stockage de certains fichiers comme vidéo ou audio par exemple.

The image displays two screenshots of the File Server Management console in Windows 2003 R2.

The top screenshot shows the **File Server Management (Local)** console with the **Quota Management** view selected. The main pane displays a table of quota templates:

Quota Template	Limit	Quota Type	Quota Label
100 MB Limit	100 MB	Hard	

The right-hand pane shows the **Actions** menu with **Quota Templates** expanded.

The bottom screenshot shows the **File Server Management (Local)** console with the **File Screening Management** view selected. The main pane displays a table of file screen templates:

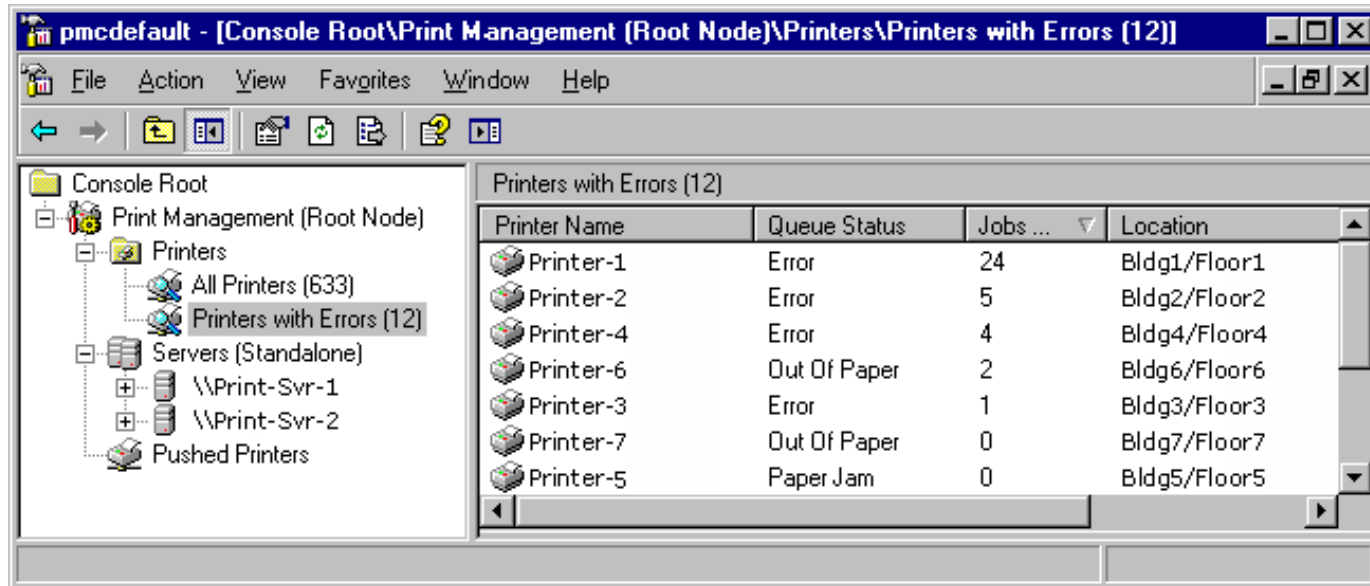
File screen Template	Screening Type	File Groups
Block Audio and Video ...	Active	Block: Audio and Video Files
Block E-mail Files	Active	Block: E-mail Files
Block Executable Files	Active	Block: Executable Files
Block Image Files	Active	Block: Image Files
Monitor Executable an...	Passive	Warn: Executable Files, System Files

The right-hand pane shows the **Actions** menu with **File Screen Templates** expanded, listing actions like **Create File Screen Templ...**, **Refresh**, **View**, **New Window from Here**, and **Help**.



# Windows 2003 R2

- SFU 3.5 intégré NIS, NFS ..
- **Print Management**



The screenshot shows the 'pmcdefault' console window titled '[Console Root\Print Management (Root Node)\Printers\Printers with Errors (12)]'. The left pane shows a tree view with 'Print Management (Root Node)' expanded to 'Printers', where 'Printers with Errors (12)' is selected. The right pane displays a table of printer error details.

Printer Name	Queue Status	Jobs ...	Location
Printer-1	Error	24	Bldg1/Floor1
Printer-2	Error	5	Bldg2/Floor2
Printer-4	Error	4	Bldg4/Floor4
Printer-6	Out Of Paper	2	Bldg6/Floor6
Printer-3	Error	1	Bldg3/Floor3
Printer-7	Out Of Paper	0	Bldg7/Floor7
Printer-5	Paper Jam	0	Bldg5/Floor5

# Windows 2003 SP2

- . Windows Server 2003 with SP2
  - . Windows Server 2003 R2 with SP2
  - . Windows Server 2003 x64 Editions with SP2
  - . Windows Server 2003 R2 x64 Editions with SP2
  - . Windows Server 2003 for Itanium-based Systems with SP2
  - . Windows XP Professional x64 Edition with SP2
- 
- second half of 2006
- 
- containing previously-released security updates, hotfixes, and reliability and performance improvements



# Windows 2003 SP2

- **Windows Deployment Services**

WDS is an updated and redesigned version of RIS. WDS will be required to support the deployment of Windows Vista. WDS offers this functionality along with improved security surrounding image store, delegation of administration and better management story

- • **Native support for Windows PE as a boot operating system.**
- • **Native support for the Windows Imaging (WIM) file format.**
- • **An extensible and higher-performing PXE server component.**
- • **A new client menu for selecting boot operating systems.**

- La possibilité de faire prendre en charge par des matériels connectés les fonctions de calcul réseau (assemblage, désassemblage, etc.) afin de limiter la charge du processeur,



# Windows 2003 SP2

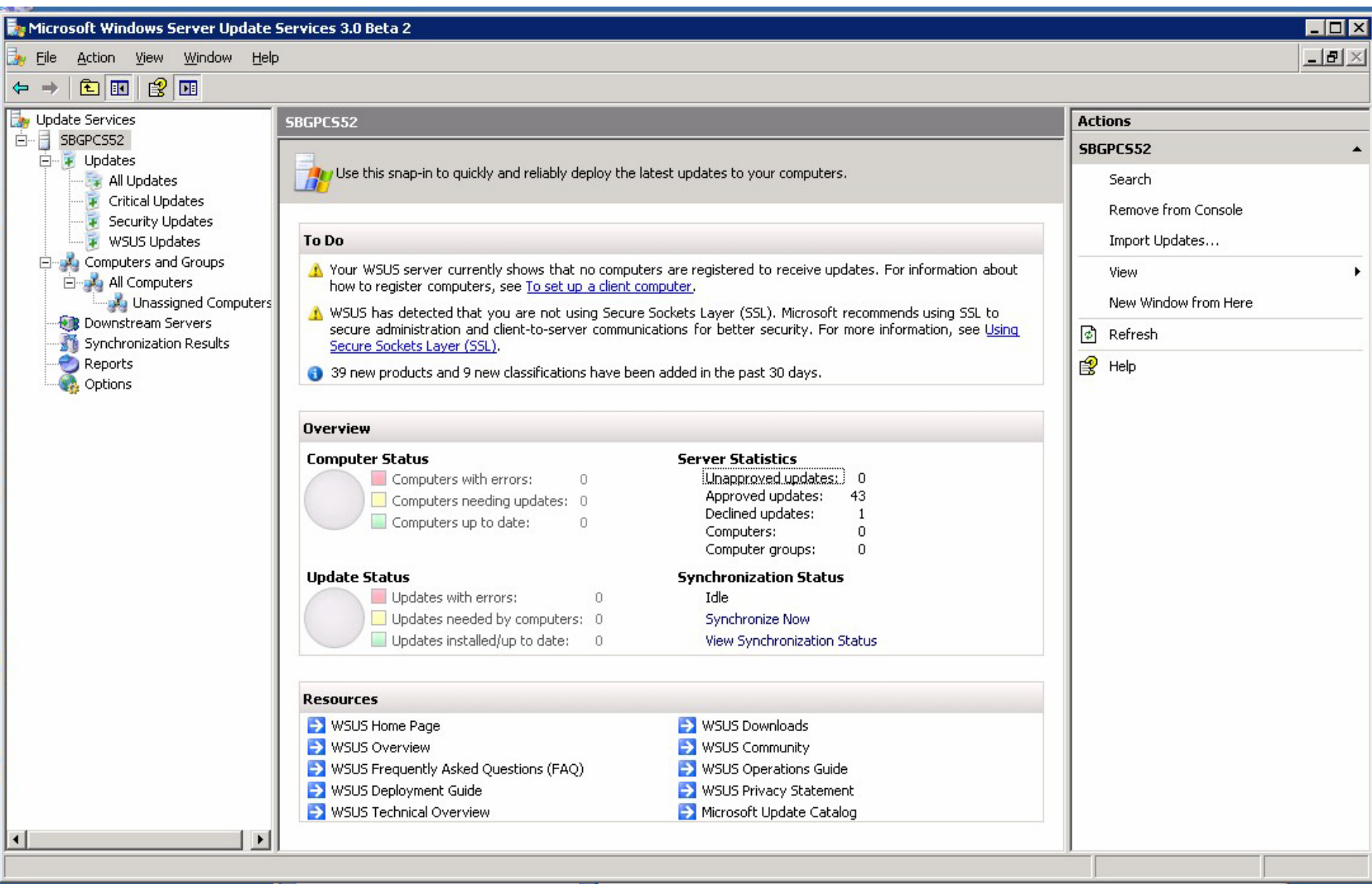
- Wi-Fi Protected Access 2
- GPO WPA2
- Performance improvements under Windows Virtualization
- Microsoft Management Console 3.0  
Action pane,  
New Add or Remove Snap-in dialog box



# WSUS V3

- Management par MMC 3.0, accès KB, MSRC.
- Envois de Mails
- CleanUp Wizard
- Migration facile depuis WSUS 2.0
- Rapports, droits accès
- Changer la fréquence de synchronisation
- Plus de choix au niveau des langues
- Inventaire matériel et logiciels des PC clients
- Support Vista
- Supervision par MOM
- expected to be released in the first half of 2007





- Update Services
  - SBGPC552
    - Updates
      - All Updates
      - Critical Updates
      - Security Updates
      - WSUS Updates
    - Computers and Groups
      - All Computers
      - Unassigned Computers
    - Downstream Servers
    - Synchronization Results
    - Reports
    - Options

SBGPC552

Use this snap-in to quickly and reliably deploy the latest updates to your computers.

**To Do**

- ⚠ Your WSUS server currently shows that no computers are registered to receive updates. For information about how to register computers, see [To set up a client computer](#).
- ⚠ WSUS has detected that you are not using Secure Sockets Layer (SSL). Microsoft recommends using SSL to secure administration and client-to-server communications for better security. For more information, see [Using Secure Sockets Layer \(SSL\)](#).
- ℹ 39 new products and 9 new classifications have been added in the past 30 days.

**Overview**

<p><b>Computer Status</b></p> <ul style="list-style-type: none"> <li>Computers with errors: 0</li> <li>Computers needing updates: 0</li> <li>Computers up to date: 0</li> </ul>	<p><b>Server Statistics</b></p> <ul style="list-style-type: none"> <li>Unapproved updates: 0</li> <li>Approved updates: 43</li> <li>Declined updates: 1</li> <li>Computers: 0</li> <li>Computer groups: 0</li> </ul>
<p><b>Update Status</b></p> <ul style="list-style-type: none"> <li>Updates with errors: 0</li> <li>Updates needed by computers: 0</li> <li>Updates installed/up to date: 0</li> </ul>	<p><b>Synchronization Status</b></p> <ul style="list-style-type: none"> <li>Idle</li> <li><a href="#">Synchronize Now</a></li> <li><a href="#">View Synchronization Status</a></li> </ul>

**Resources**

- [WSUS Home Page](#)
- [WSUS Overview](#)
- [WSUS Frequently Asked Questions \(FAQ\)](#)
- [WSUS Deployment Guide](#)
- [WSUS Technical Overview](#)
- [WSUS Downloads](#)
- [WSUS Community](#)
- [WSUS Operations Guide](#)
- [WSUS Privacy Statement](#)
- [Microsoft Update Catalog](#)


**Actions**

- SBGPC552
- Search
  - Remove from Console
  - Import Updates...
  - View
  - New Window from Here
  - Refresh
  - Help

Update Services












- SBGPCS52
  - Updates
    - All Updates
    - Critical Updates
    - Security Updates
    - WSUS Updates
  - Computers and Groups
    - All Computers
    - Unassigned Computers
  - Downstream Servers
  - Synchronization Results
  - Reports
  - Options

### Options

 This view allows you to configure settings on your server.

---

#### Options

-  **Update Source and Proxy Server**  
You can choose whether this Windows Server Update Services server synchronizes from Microsoft Update or from an upstream Windows Server Update Services server on your network.
-  **Products and Classifications**  
You can specify the products for which you want updates and the types of updates you want.
-  **Update Files and Languages**  
You can choose whether to download update files, where to store downloaded files, and which update languages you want to download.
-  **Synchronization Schedule**  
You can choose to synchronize manually or set a schedule for daily automatic synchronization.
-  **Automatic Approvals**  
You can specify how to automatically approve installation of updates for selected groups and how to approve revisions to existing updates.
-  **Computers**  
You can specify how to assign computers to groups.
-  **Server Cleanup Wizard**  
You can use server cleanup to free up old computers, updates and update files from your server.
-  **Reporting Rollup**  
You can choose to have downstream servers roll up update and computer status.
-  **E-Mail Notifications**  
You can have Windows Server Update Services send e-mail notifications of new updates and status reports.
-  **Microsoft Update Improvement Program**  
You have the option of joining the Microsoft Update Improvement Program to improve the quality, reliability, and performance of Microsoft software.
-  **WSUS Server Configuration Wizard**  
You can configure several of the basic Windows Server Update Services settings by running this wizard. Each of the settings here can be configured separately, using the tools below.

### Actions

#### Options

- Search
- View
- New Window from Here
- Refresh
- Help

# Vista

- Fin 2006.
- Actuellement RC1 (publique)
- **Vista Capable**  
800MHz or faster processor / 512MB of RAM.  
A DirectX 9 capable video card is also required  
20GB hard drive
- **Interface Aero,**  
1GHz processor / 1GB of RAM  
modern DirectX 9 graphics card with at least 128MB  
40GB hard drive





# Vista

- **GPO 2400 settings** ( +800 XP)
  - power management
  - device installation controls
    - **Prevent installation of all devices.**
    - **Allow users to install only authorized devices**
    - **Prevent installation of only prohibited devices.**
    - **Control the use of removable media storage devices**
  - security settings (IPSec and firewall)
  - printer assignment.
- **Group Policy event logging**
- User Account Control (UAC) *useless*
- Bitlocker, Cryptage du disque  
puce TPM sur la carte Mère  
plus de dual boot / changements de CM impossible



# Vista

- **Diagnostic Tools**

Memory Diagnostics

Network Diagnostics

Reliability Monitor (tracks hardware failures, operating system failures, application failures, and other events that may indicate problems with the stability of your machine.)

- **Task Scheduler**: launch tasks when **specific events** occur like insufficient disk space or if a user locks/unlocks the workstation or if the computer is in **idle mode**

- **Event viewer**



- Task Scheduler
- Event Viewer
  - Custom Views
  - Administrative Events
  - Windows Logs
    - Application
    - Security
    - Setup
    - System
    - Forwarded Events
  - Applications and Services Logs
    - DFS Replication
    - Hardware Events
    - Internet Explorer
    - Key Management Service
    - Microsoft
      - Windows
        - Backup
          - Microsoft-Windows-Bac
        - Bits-Client
        - CAPI2
        - CertificateServicesClient-Cre
        - CodeIntegrity
        - CorruptedFileRecovery-Clie
        - CorruptedFileRecovery-Serv
        - DateTimeControlPanel
        - Diagnosis-DPS
        - Diagnosis-MSDT
        - Diagnosis-PLA
        - Diagnostics-Networking
        - Diagnostics-Performance
        - DiskDiagnostic
        - DiskDiagnosticDataCollector
        - DiskDiagnosticResolver
        - DriverFrameworks-UserMod

Level	Date and Time	Source	Event ID	Task Category
Information	04/09/2006 15:08:50	Desktop Wi...	9007	None
Information	04/09/2006 14:57:53	VSS	8224	None
Information	04/09/2006 14:20:11	LoadPerf	1000	None
Information	04/09/2006 14:20:10	LoadPerf	1001	None
Information	04/09/2006 14:18:07	SecurityCen...	1	None
Information	04/09/2006 14:16:07	CertificateSe...	1	None
Information	04/09/2006 14:16:07	CertificateSe...	1	None
Information	04/09/2006 14:16:06	Search	1003	Search servic
Information	04/09/2006 14:16:02	WMI	5617	None
Information	04/09/2006 14:16:00	WMI	5615	None
Information	04/09/2006 14:16:00	VMTools	105	None
Information	04/09/2006 14:15:48	Security-Lic...	902	None
Information	04/09/2006 14:15:48	Security-Lic...	1005	None
Information	04/09/2006 14:15:48	Security-Lic...	1003	None

- Actions**
- Application
    - Open Saved Log...
    - Create Custom View...
    - Import Custom View...
    - Clear Log...
    - Filter Current Log...
    - Properties
    - Find...
    - Save Events As...
    - View
    - Refresh
    - Help
  - Event 1, CertificateServicesCl...
    - Event Properties
    - Attach Task To This Ev...
    - Copy
    - Save Selected Events...
    - Refresh
    - Help

Event 1, CertificateServicesClient

General Details

Certificate Services Client has been started successfully.

Log Name: Application

Source: CertificateServicesClient    Logged: 04/09/2006 14:16:07

Event ID: 1    Task Category: None

Level: Information    Keywords:

User: SYSTEM    Computer: Test-PC

OpCode: Info

More Information: [Event Log Online Help](#)

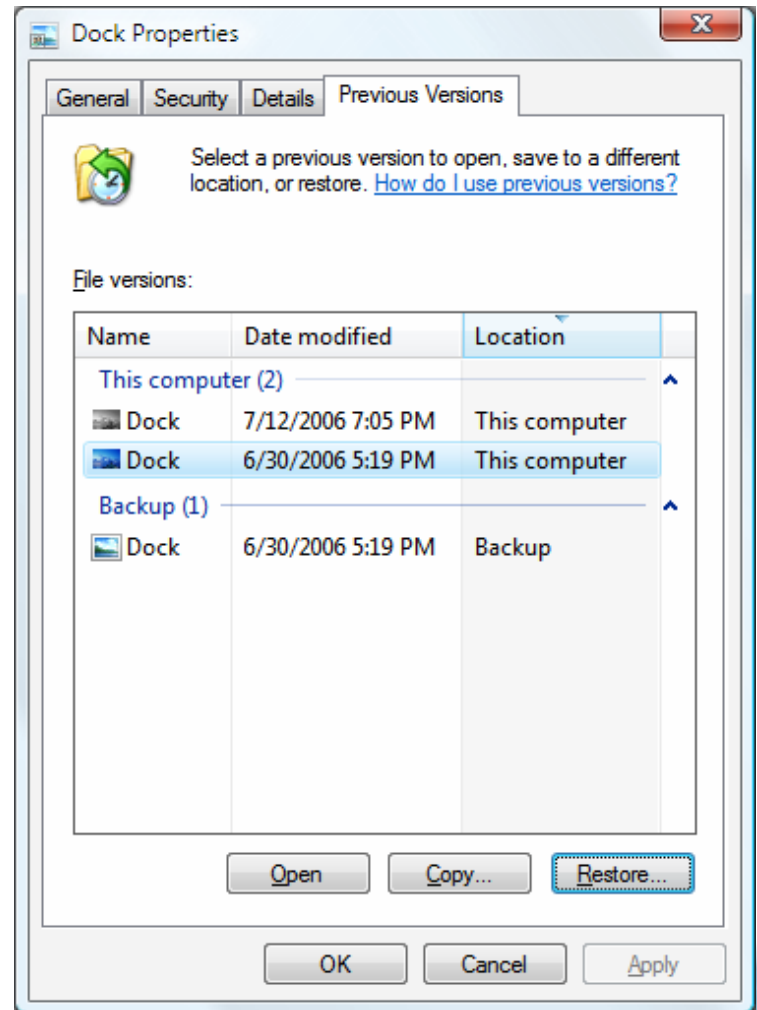
# Vista

- **NAP, network Access Protection/ Cisco**  
computer health policy validation, ensure ongoing compliance with health policies, and optionally restrict the access of computers that do not comply with system health requirements until their health state can be corrected (IPsec, DHCP, Vlan)
- **Deployment tools :**
  - *User State Migration Tool - USMT 3.0*, migrate user accounts
  - *ImageX*, OS cloning, HAL-independent, WIM-format, Multiple images
  - *Windows System Image Manager (WSIM)*: create and edit the XML-based unattended-configuration files, and to add, modify, or delete optional components such as languages, service packs, updates, and device drivers within an existing Vista image
  - *Windows Deployment Services (WDS)*: replacement for RIS, PXE et WinPE 2.0
  - *Standard User Analyzer*: help developers and administrators to identify the rights an application needs



# Vista

- Shadow Copy –VSS  
saves previous versions of files



# Vista Server

- current release timeframe second half of 2007
- August 2006 CTP
- Read-Only Domain Controller
- Internet Information Services 7 modular architecture
  - HTTP Modules
  - Security Modules
  - Content Modules
  - Compression Modules
  - Caching Modules
  - Logging and Diagnostics Modules



# Vista Server – Terminal Server

- RDP 6.0
  - **Remote Programs:** Application publishing with client-side file type associations
  - **Seamless Windows:** Remote applications can run on a client machine that are served by a Remote Desktop connection
  - **Terminal Server Gateway:** IIS server to accept connections for back-end Terminal Services servers via an HTTPS connection
  - Rewrite of device redirection to be more general-purpose
  - 32-bit Color Support
  - Dual Monitor Support

