



Evolution des infrastructures réseaux

Journées Informatiques IN2P3

Septembre 2006

jerome.bernier@in2p3.fr

dapnia

cea

saclay





IN2P3





RENATER4



Connexion à l'Internet mondial

SFINX
Global Internet eXchange, accès aux autres prestataires de service Internet en France

GEANT2 www.geant2.net
Connexion vers les réseaux de la Recherche en Europe, et les réseaux de la Recherche :
des pays méditerranéens
 de la zone Asie Pacifique
 de l'Amérique du sud
 de l'Amérique centrale
 U.S.A.



Connexion vers les DOM-TOM

-  Réseau en Ile de France
-  2,5 Gbit/s
-  Liaisons projets de recherche
-  Liaison projets à venir
-  NR
-  NRI



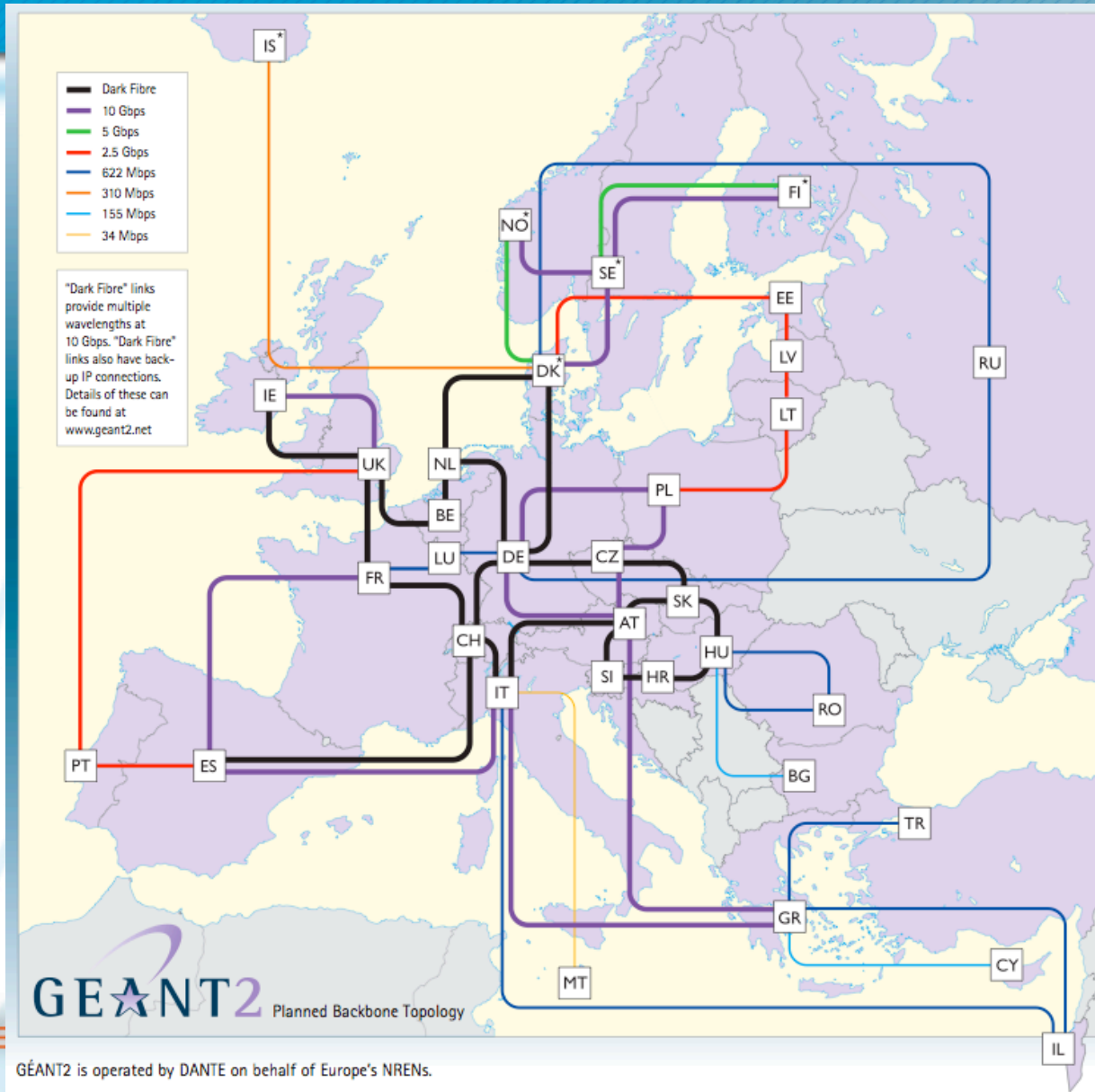
RENATER4 FON



- CECIETEL
- Level 3
- 9 Telia.com



GEANT2





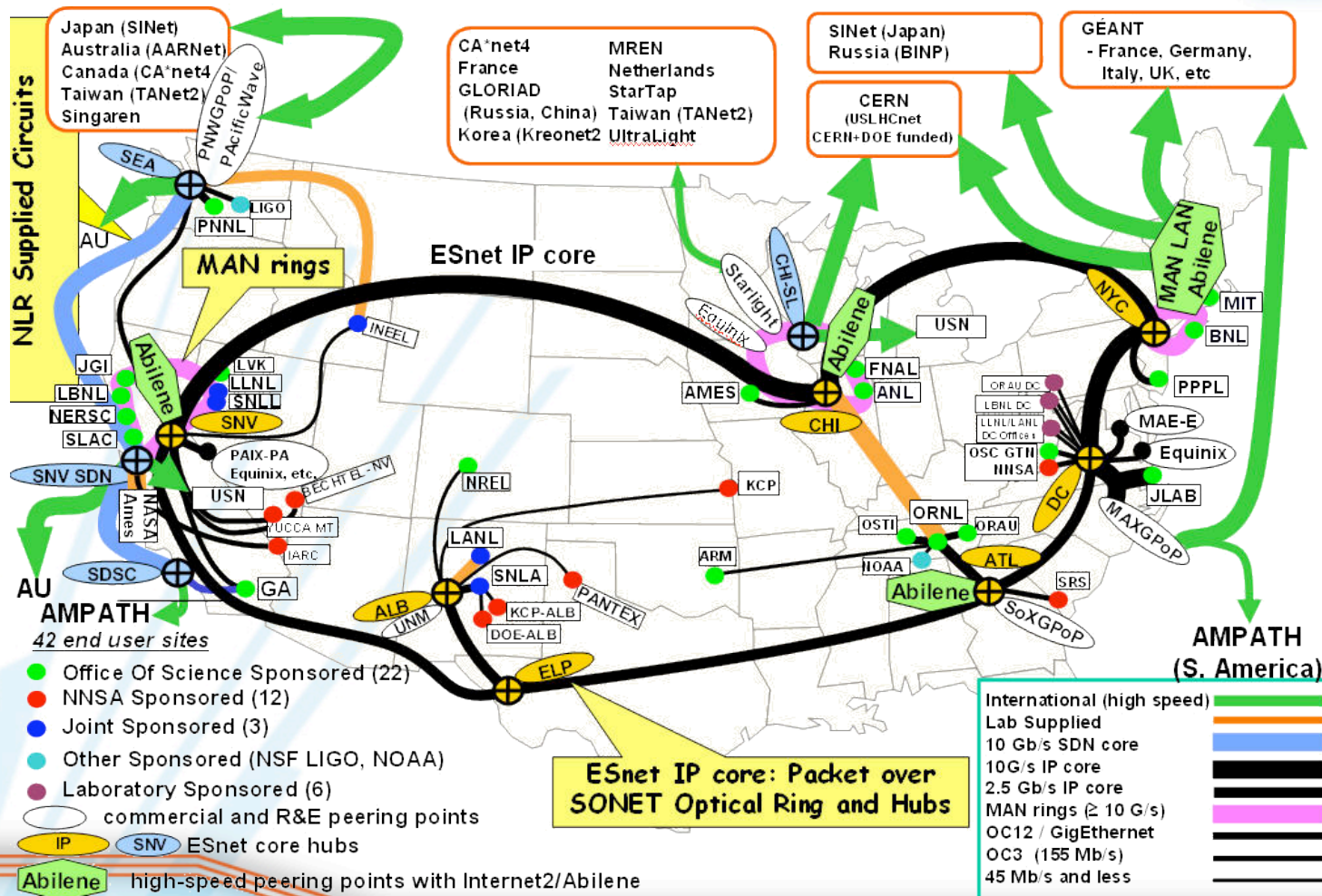
GEANT2



ESNET

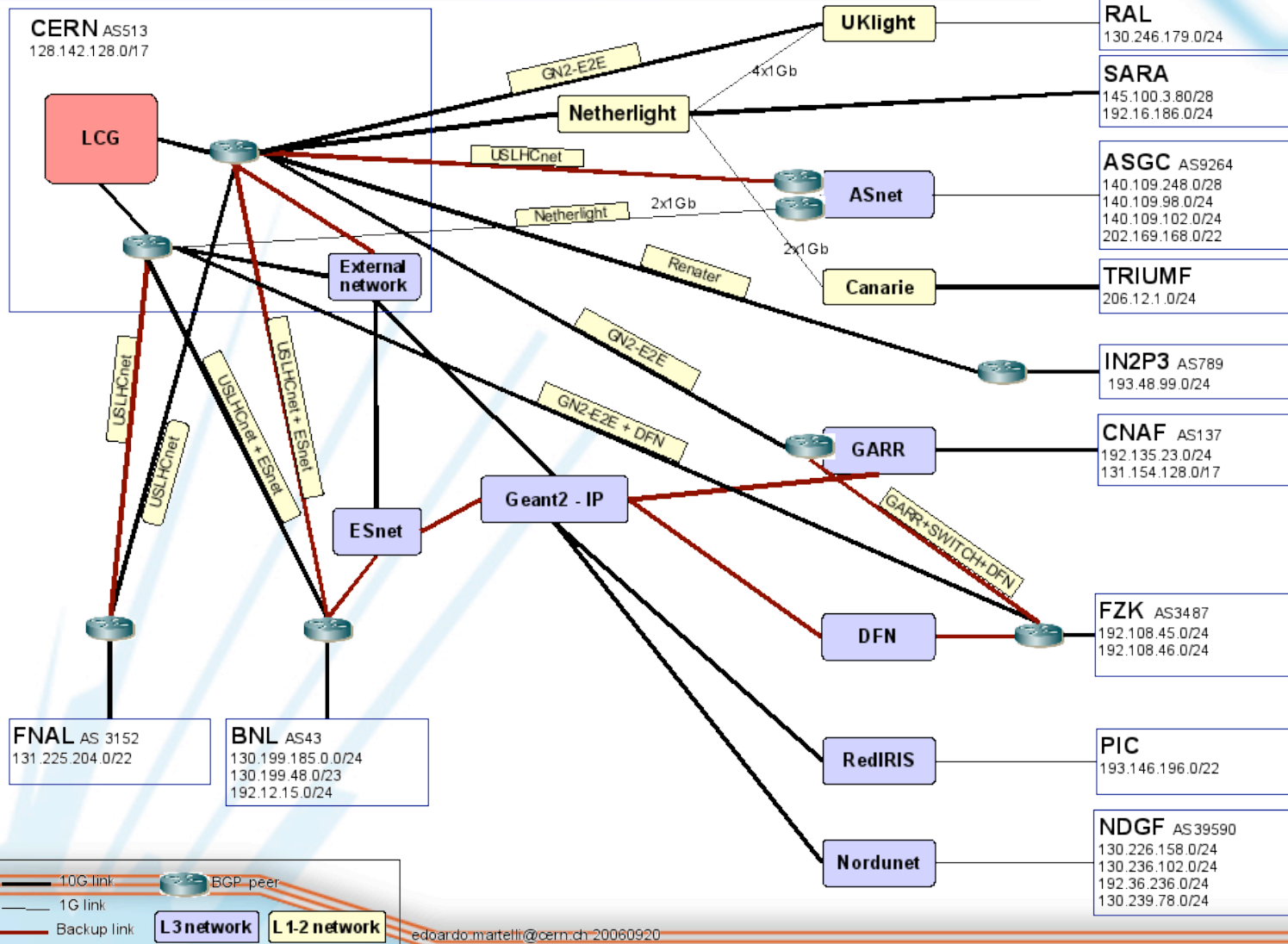


ESnet's Physical Connectivity (Spring 2006)



LHC Optical Private Network

LHCOPN – current status

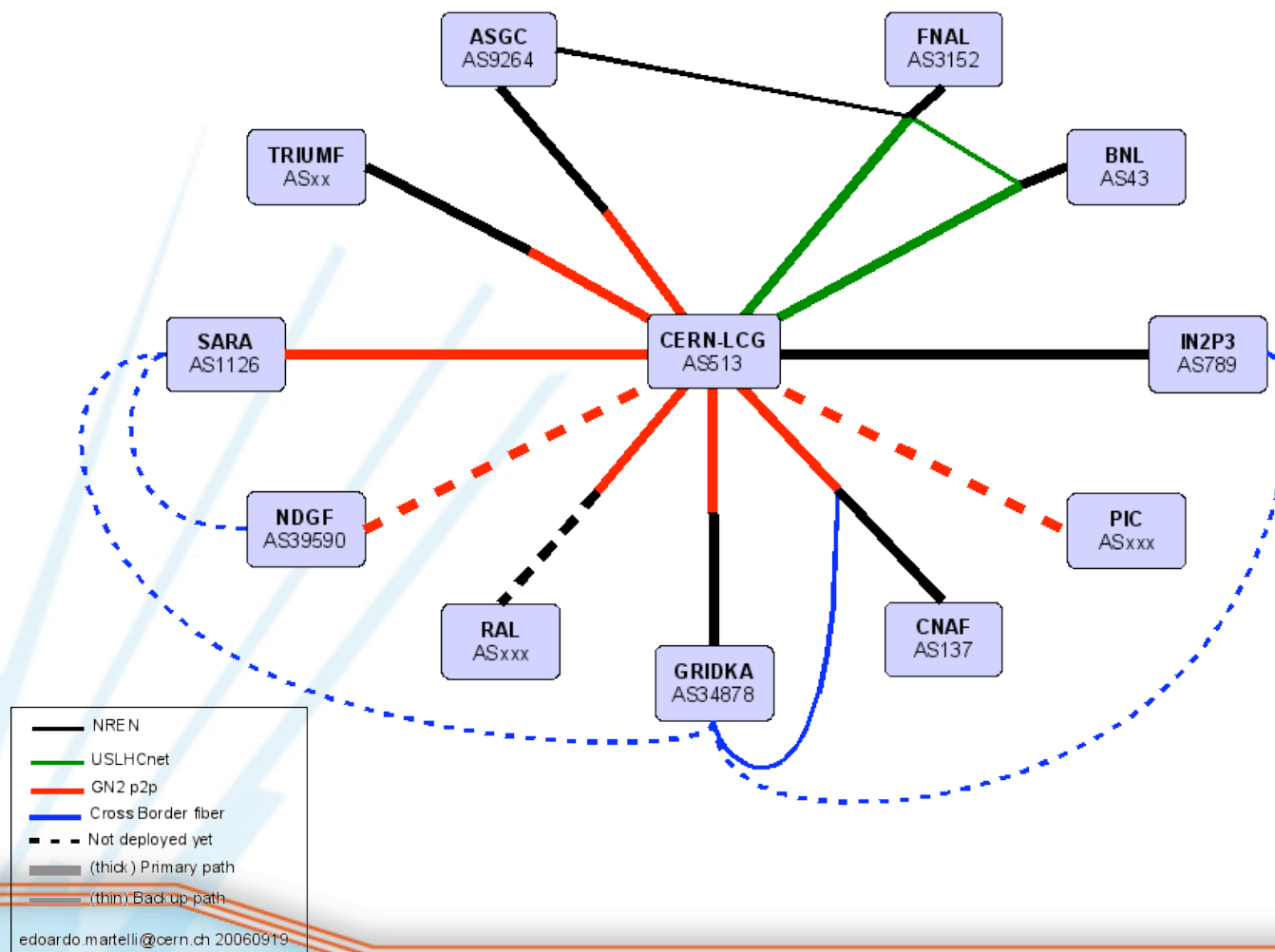




Tier1's links



Tier0-Tier1s connections





CC Logical



Fermilab



2x 1Gbps

1Gbps

CC-IN2P3

N x 1Gbps



Tier2

Other Tier1



10Gbps



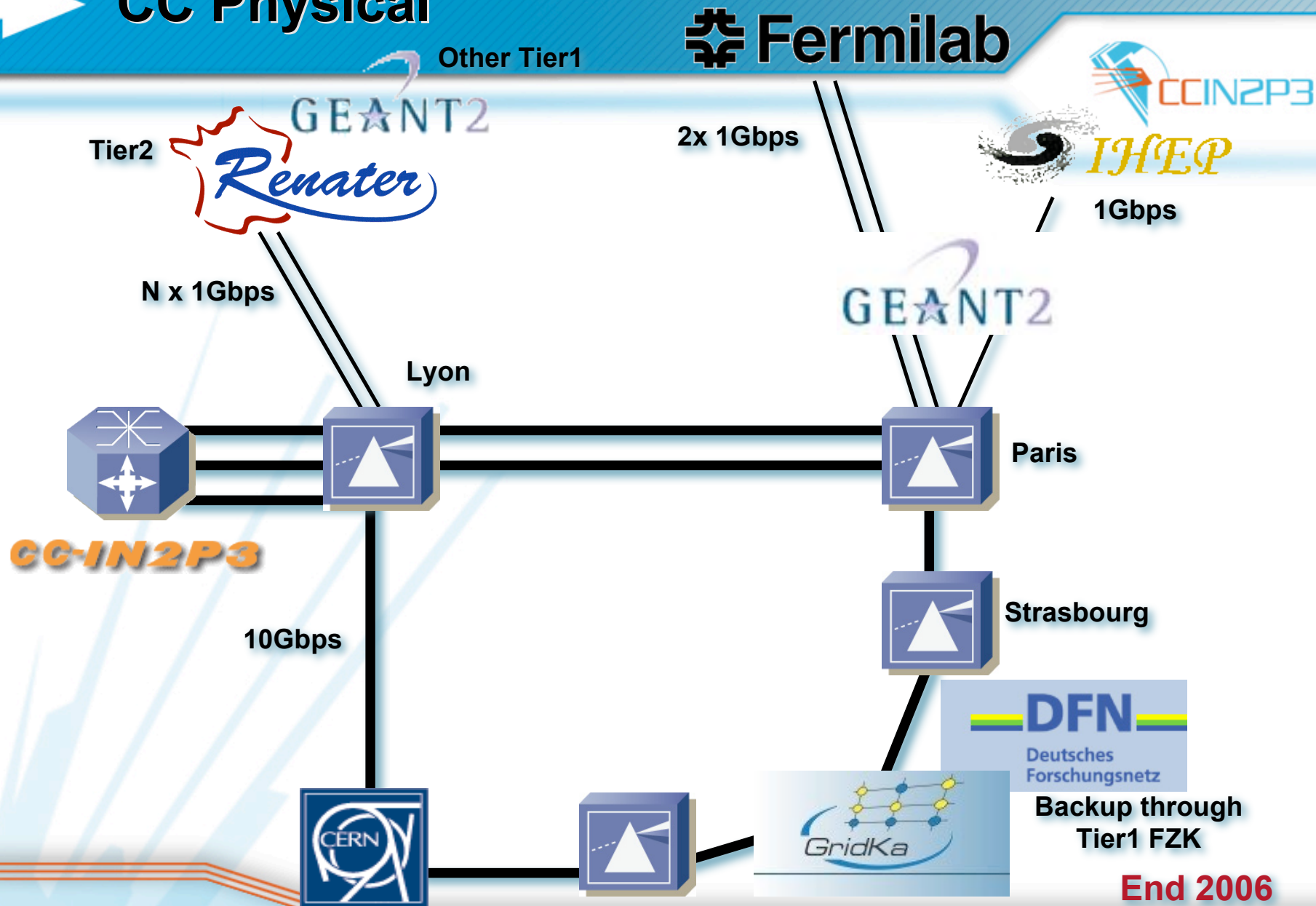
Backup through Tier1 FZK

+ other Tier1s



End 2006

CC Physical



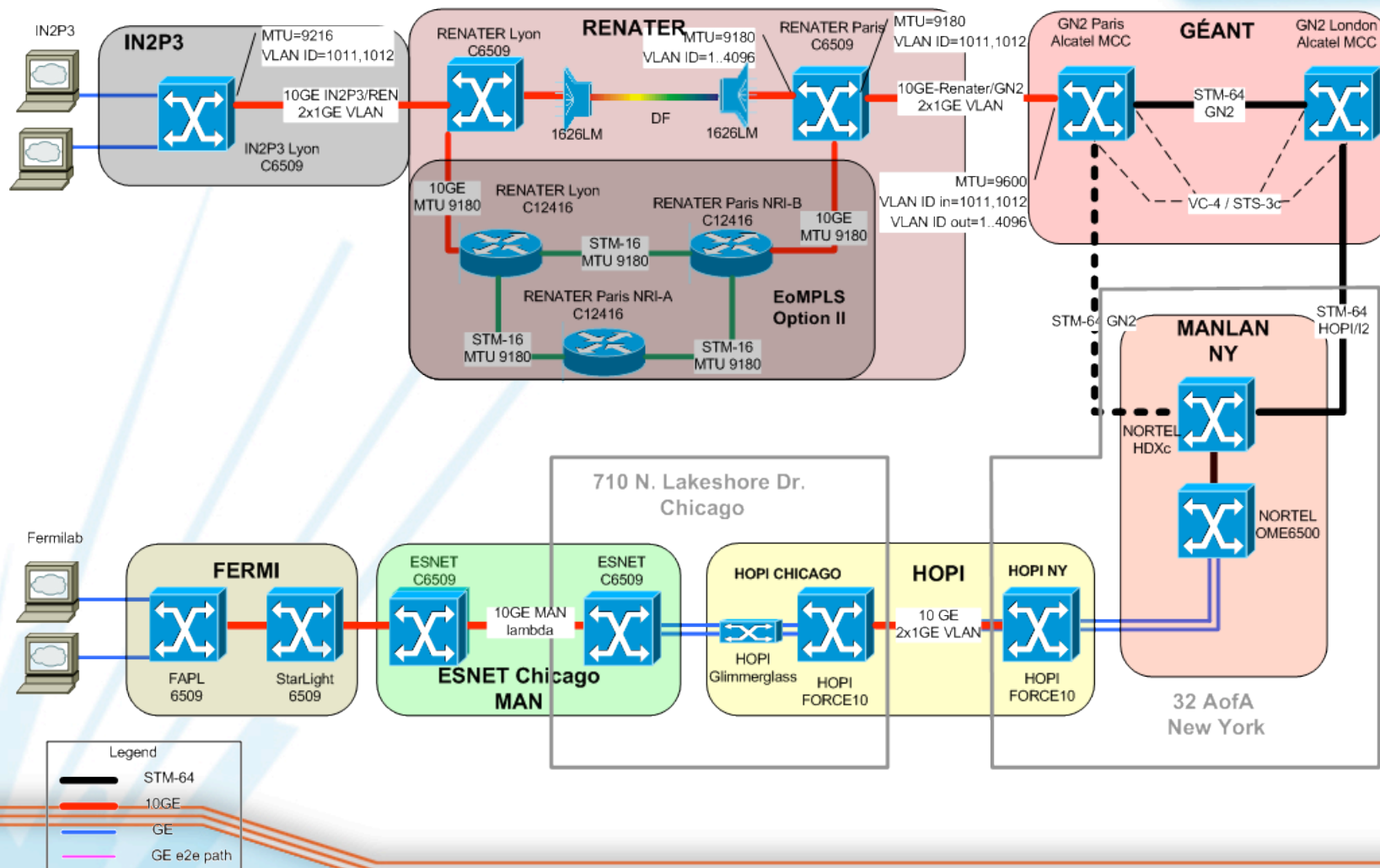
End 2006



IGTMD

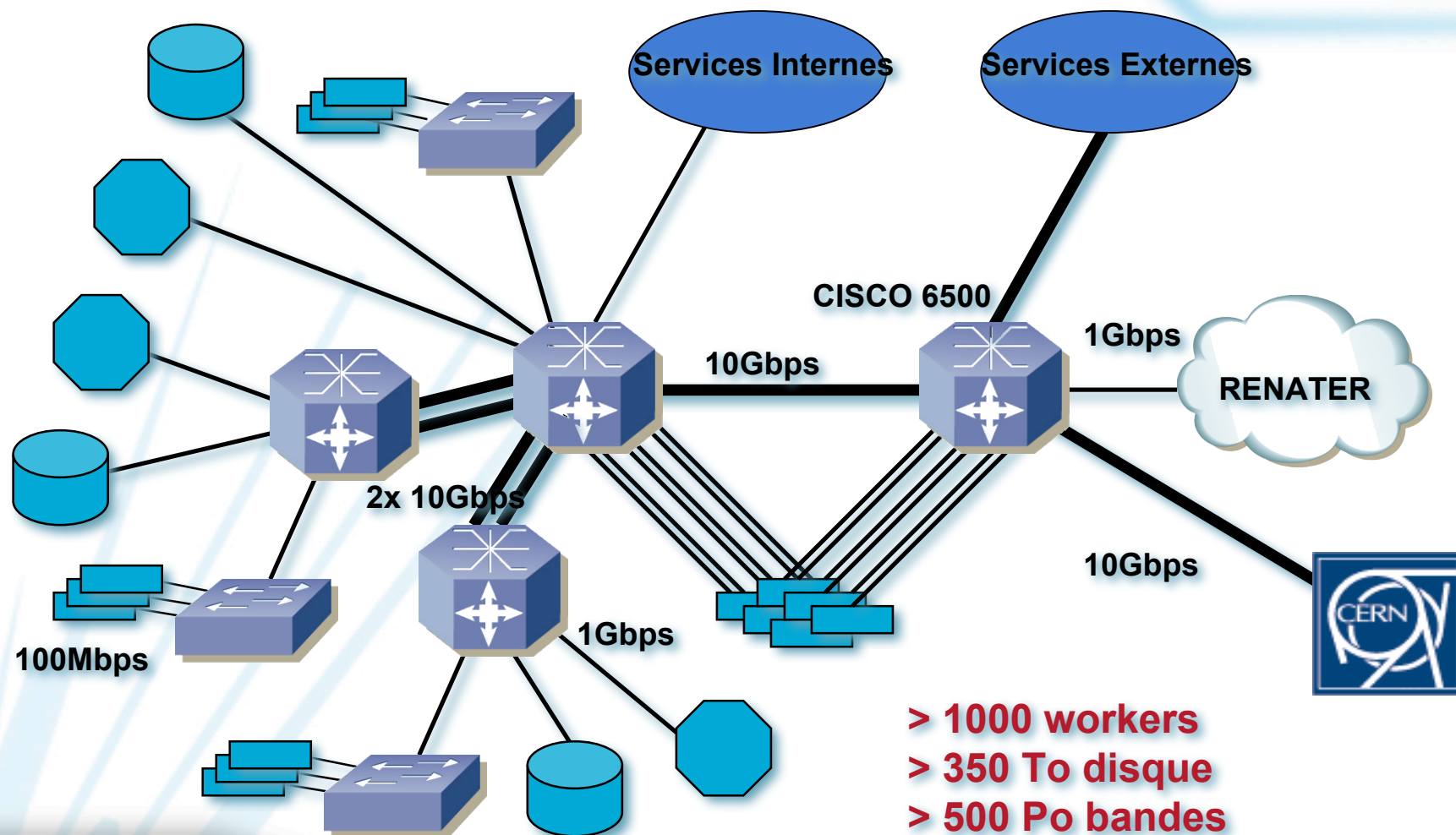


IN2P3-FERMILab 2xGE
Path setup



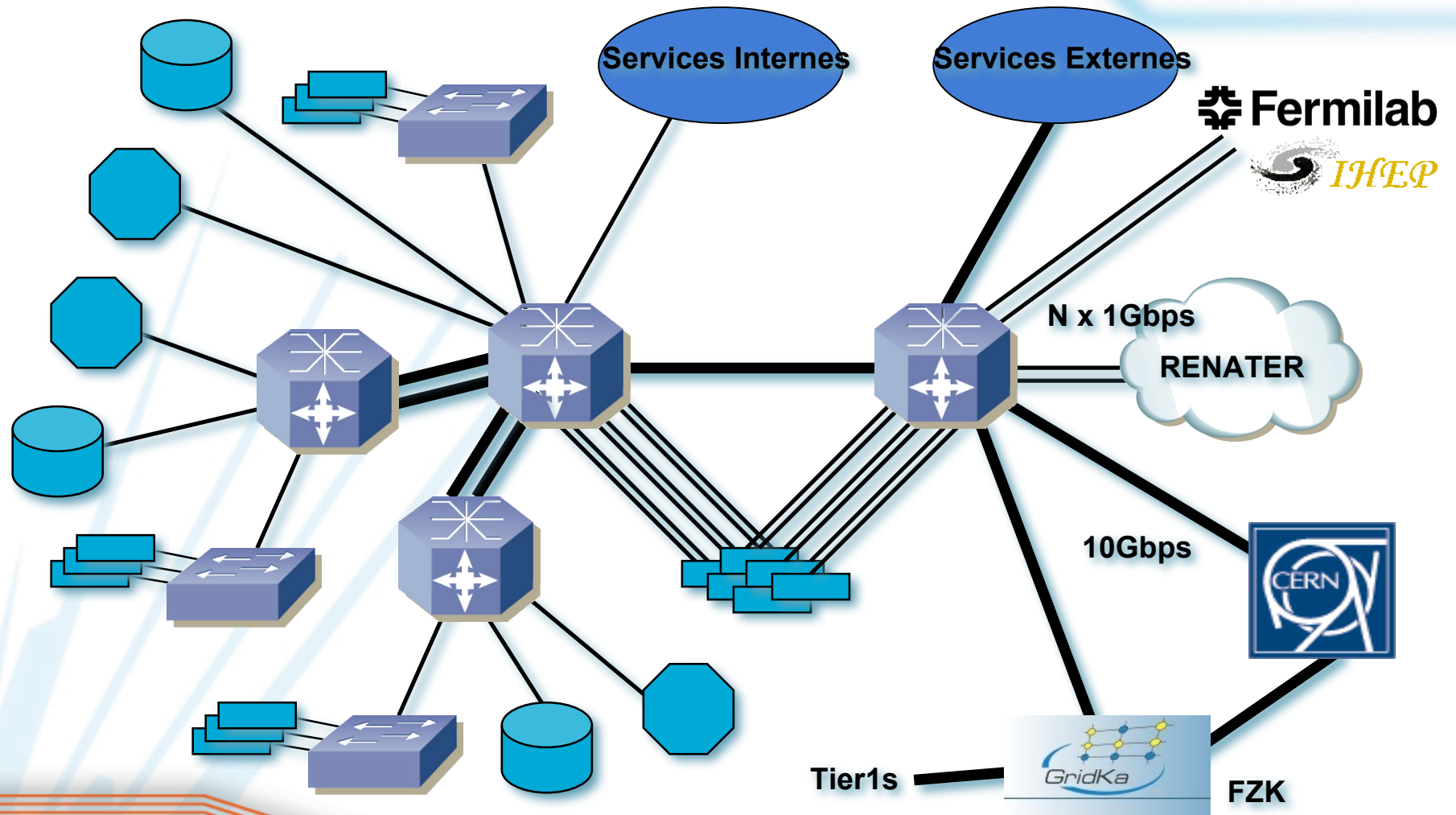


LAN CCIN2P3



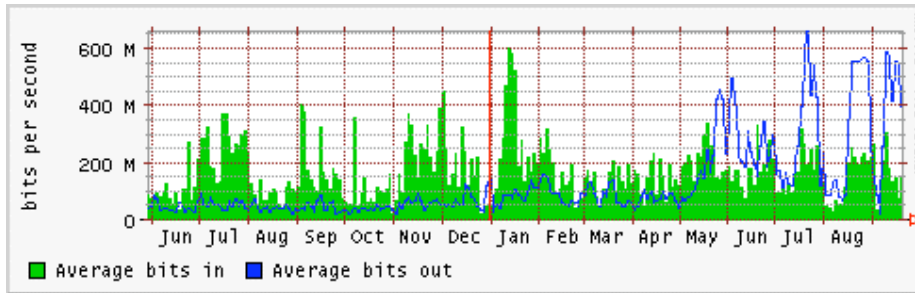


LAN CCIN2P3





<http://netstat.in2p3.fr>



CCIN2P3-RENATER

CCIN2P3-CERN

